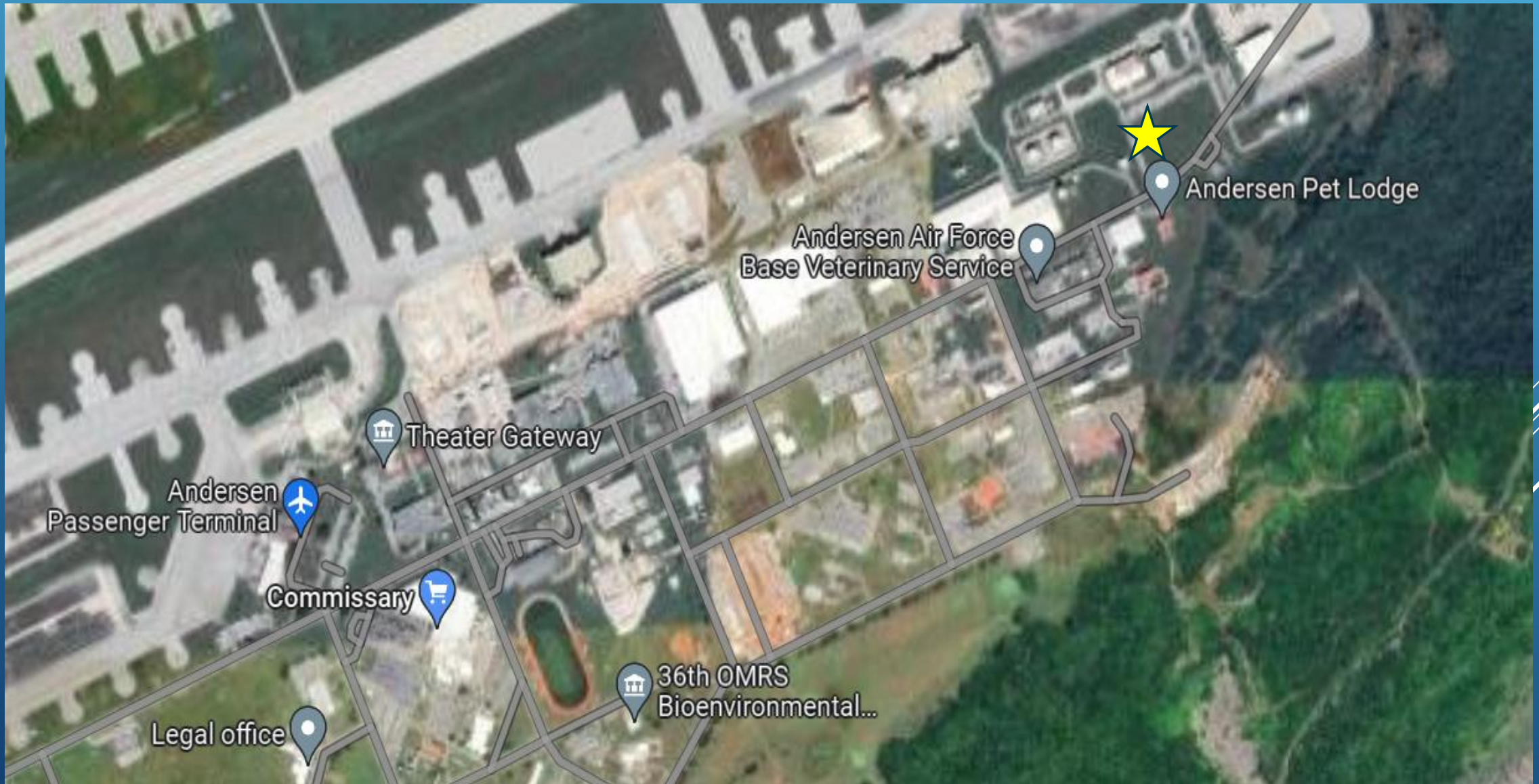


**NEW TERMINAL IS LOCATED AT THE END OF ARC LIGHT BLVD ON THE LEFT**





# DEPARTURES FROM: ANDERSEN AFB (UAM)

## WEDNESDAY, 21 JANUARY 2026



<u>ROLL CALL</u>	<u>DESTINATION(S)</u>	<u>SEATS</u>	<u>REMARKS</u>
0840	HONOLULU, HAWAII	73T	TBD
1010	YOKOTA AIR BASE, JAPAN	10T	PASSPORT REQUIRED
2355	HONOLULU, HAWAII	73T	TBD

Seat Release: T= Tentative, F= Firm, TBD= To Be Determined

\*TRAVEL RESTRICTIONS APPLY\* CONTACT AMC PASSENGER TERMINAL FOR INFORMATION

**All flights are subject to change without notice**

**Please arrive NLT= NO LATER THAN ONE HOUR PRIOR to roll call to mark yourself present**



# DEPARTURES FROM: ANDERSEN AFB (UAM)

## THURSDAY, 22 JANUARY 2026



<u>ROLL CALL</u>	<u>DESTINATION(S)</u>	<u>SEATS</u>	<u>REMARKS</u>
-	NO SCHEDULED DEPARTURES	-	-

Seat Release: T= Tentative, F= Firm, TBD= To Be Determined

\*TRAVEL RESTRICTIONS APPLY\* CONTACT AMC PASSENGER TERMINAL FOR INFORMATION

**All flights are subject to change without notice**

**Please arrive NLT= NO LATER THAN ONE HOUR PRIOR to roll call to mark yourself present**



# DEPARTURES FROM: ANDERSEN AFB (UAM)

## FRIDAY, 23 JANUARY 2026



<u>ROLL CALL</u>	<u>DESTINATION(S)</u>	<u>SEATS</u>	<u>REMARKS</u>
-	NO SCHEDULED DEPARTURES	-	-

Seat Release: T= Tentative, F= Firm, TBD= To Be Determined

\*TRAVEL RESTRICTIONS APPLY\* CONTACT AMC PASSENGER TERMINAL FOR INFORMATION

**All flights are subject to change without notice**

**Please arrive NLT= NO LATER THAN ONE HOUR PRIOR to roll call to mark yourself present**





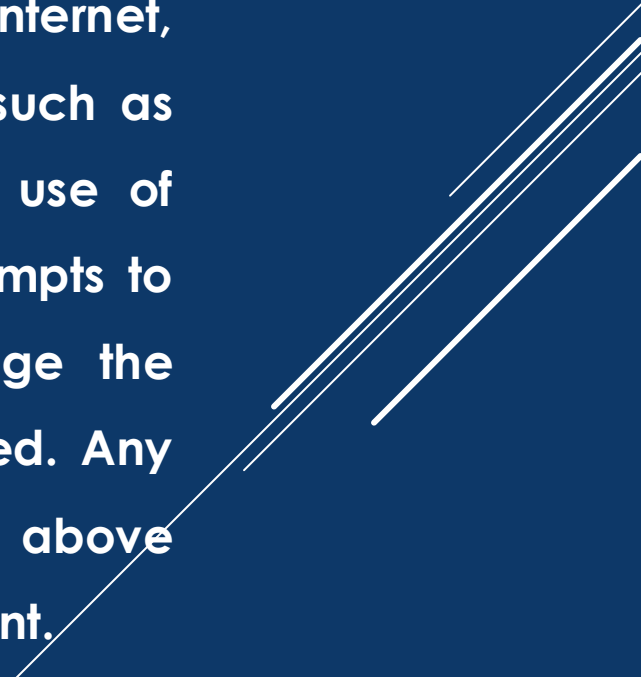
# NOTICE



---

## Information Disseminated to the Public and Authorized Individuals

Information and files provided to authorized individuals by internet, mail, email, and fax containing mission-related information, such as operational or flight schedules, are intended solely for the use of determining space-r and space-a flight availability. Any attempts to retransmit, upload, pass to unauthorized persons, or change the information received for any other purpose is strictly prohibited. Any action circumventing the parameters specified and/or implied above is subject to investigation and/or prosecution by law enforcement.

Several white diagonal lines of varying lengths and thicknesses are positioned on the right side of the slide, extending from the middle to the bottom right corner.